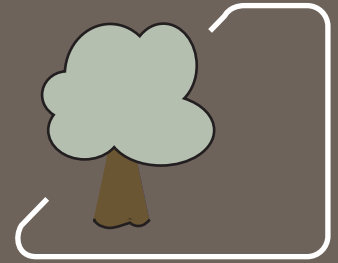


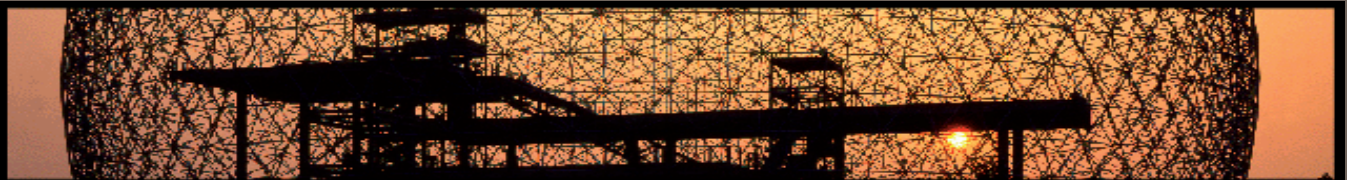


Building European Science



Action E55:

Modelling of the Performance of Timber Structures



Structures & Architecture . 21-23 July 2010 . Guimarães - Portugal

Call for Papers

to be presented at the special session on

Modelling of the Performance of Timber Structures

This call is directed to participants of COST Action E55.

Contributions on the following topics are expected:

- Analysis of Failures and Malfunctions
- Vulnerability of Timber Components
- Robustness of Structures

The Conference:

The 1st International Conference
on Structures & Architecture
21 - 23 July 2010 University of Minho
Guimarães - Portugal
www.icsa2010.com/

Important Dates and Contact:

Deadline for Abstracts: 15 April 2009
Abstract Acceptance: 30 April 2009
Paper Submission: 15 December 2009

Abstracts to be submitted to
Jochen Köhler, [jochen.koehler@ethz.ch]



Sustainable Resource



Efficient Structures



High Performance



<http://www.cost-e55.ethz.ch>

<http://cost.esf.org>

